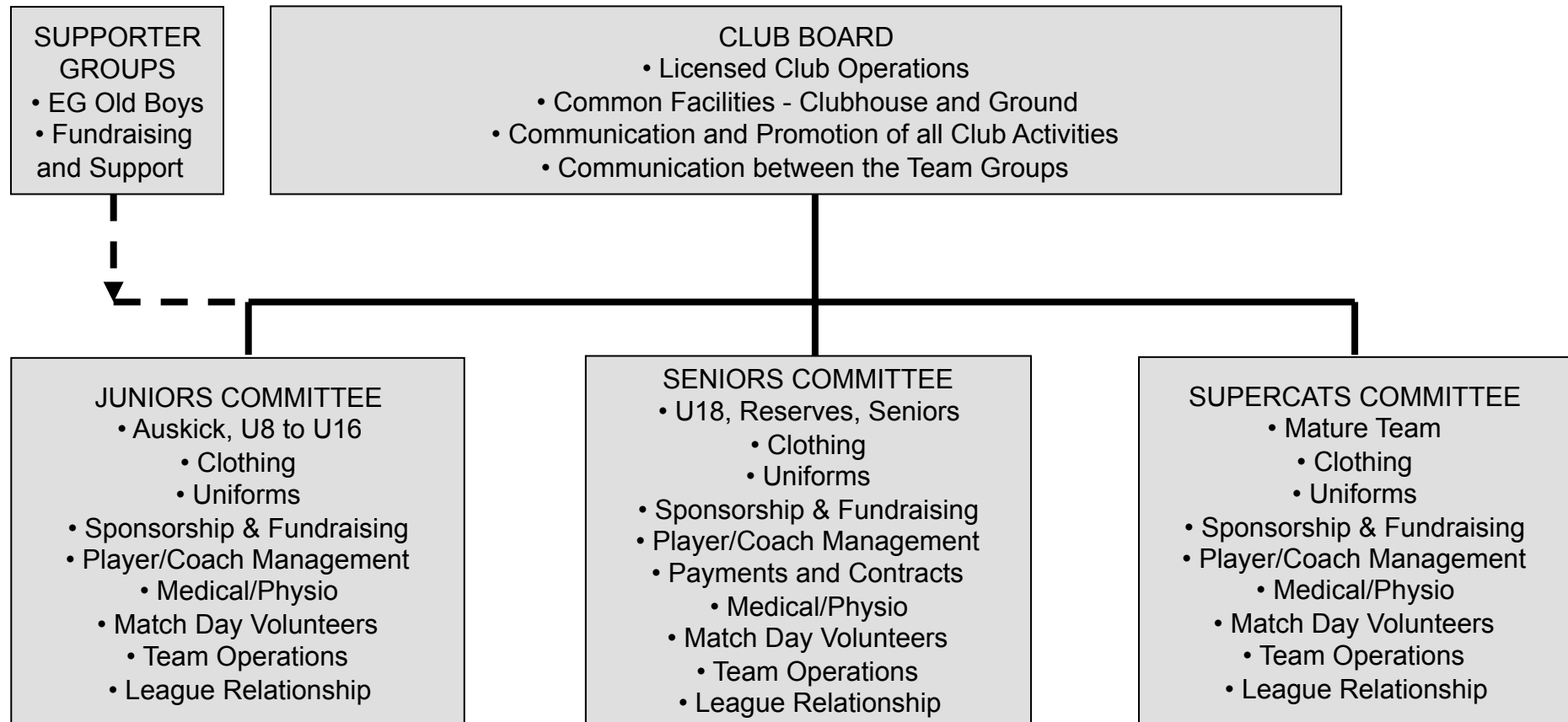




Chairman's Overview – Mike Mollison

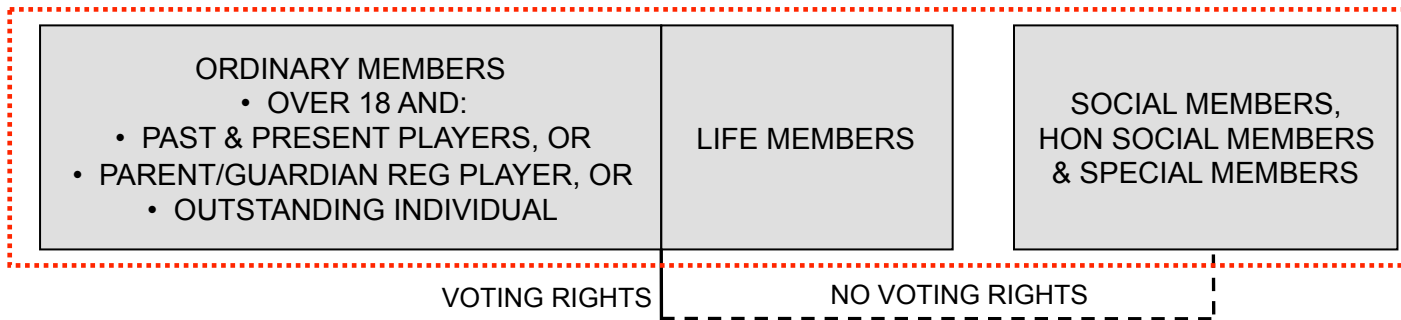
• Club Operating Structure – Sections and Responsibilities



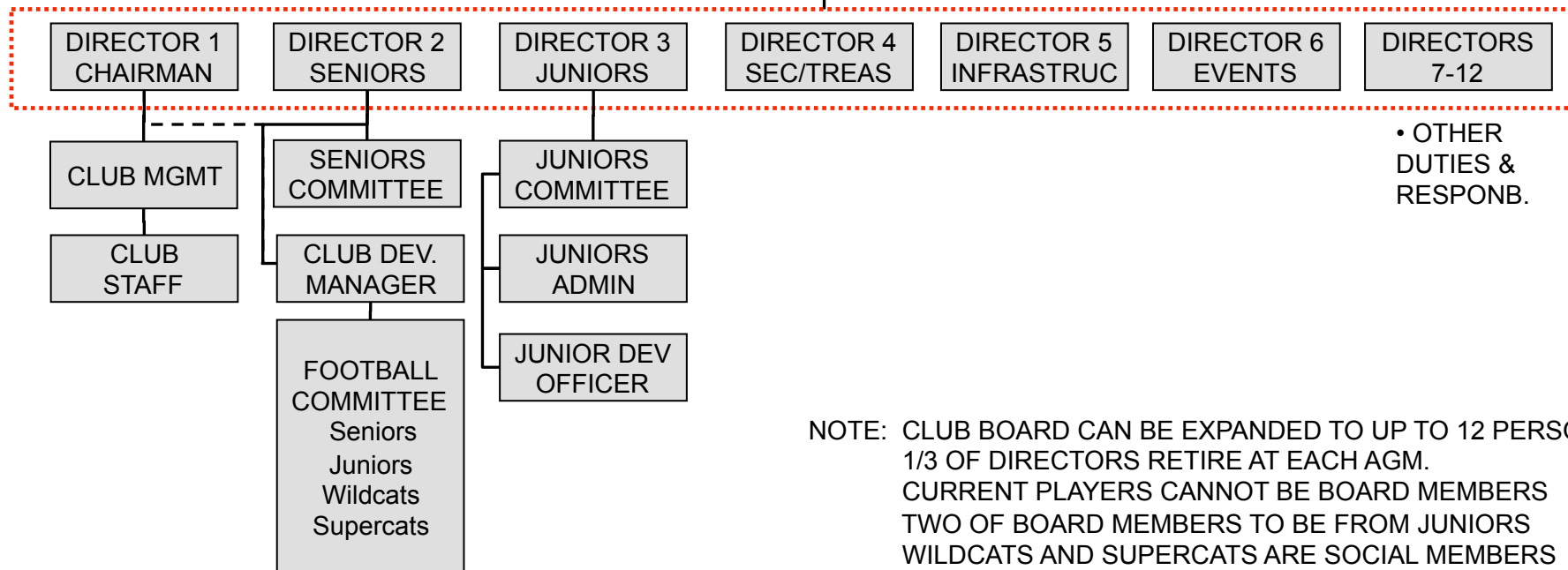


Club Corporate Structure

CLUB MEMBERSHIP



THE BOARD



NOTE: CLUB BOARD CAN BE EXPANDED TO UP TO 12 PERSONS.
1/3 OF DIRECTORS RETIRE AT EACH AGM.
CURRENT PLAYERS CANNOT BE BOARD MEMBERS
TWO OF BOARD MEMBERS TO BE FROM JUNIORS
WILDCATS AND SUPERCATS ARE SOCIAL MEMBERS